



Technical Dossier





Index

1. Rooms
2. Building drawings
3. Electrical specifications
4. Audiovisual Material
5. Technical rider



1. Rooms

- Vidreres room
- Brossa room



Vidreres Room

Upper floor

3m

230m²

Technical sources

WIFI

3x2m Screen

Projector

Lighting

Sound

Microphone

Technical data:

- 12 units of single phase charts type
- 2 units of three phase charts type
- 8 units of single phase charts type located in the terrace
- 1 unit of three phase charts type in the terrace
- 4 Outlets contain VGA Cable 8 PIHS located in the ceiling ready for delivery Audio to Video Projector from Rack.
- Maximum weight: 500 kg/m²

The floor plan shows a circular building with a central hall labeled "SALA 229.25 M2" and a diameter of "650". The perimeter is marked with "MÉDIDA DE CIRCUNFERENCIA" and "2041". The plan includes numerous rooms with dimensions, such as "119*338", "147*338", "2*140*208", "1340", "1145", "2*140*203", "118*294", "170*294", "178*294", "88*294", "172*294", "83*294", "174*294", "73*294", "174*294", "83*295", "175*295", "174*294", "175*295", "144*295", "2*140*208", "112*293", "387*100", "151*293", "2*140*207", "113*293", "175*293", "175*293", "390", "2*139", "590", "330", "207", "196", "200", "194", "348", "172", "197", "4.30 M2", "TERRASSA EXTERIOR 257.66 M2", and "ASCENSOR 4.44 M2".

Vidreres Roig

SALA
229.25 M2
DIAMETRO 650
MÉDIDA DE CIRCUNFERENCIA 2041

TERRASSA EXTERIOR
257.66 M2

VENEZIA VENTILACIÓ
4.30 M2


ASCENSOR
4.44 M2

Rooms and dimensions (clockwise from top):

- 1145
- 2*140*203
- 118*294
- 178*294
- 172*294
- 174*294
- 83*294
- 174*294
- 73*294
- 174*294
- 83*295
- 175*295
- 175*295
- 144*295
- 2*140*208
- 112*293
- 387*100
- 151*293
- 2*140*207
- 147*293
- 119*338
- 147*338
- 2*140*208
- 1340
- 197
- 172
- 348
- 194
- 200
- 196
- 207
- 330
- 390
- 2*139
- 590
- 175*293
- 113*293
- 2*140*207
- 151*293
- 2*140*207
- 147*293
- 119*338
- 147*338
- 2*140*208
- 118*294
- 178*294
- 172*294
- 174*294
- 83*294
- 174*294
- 73*294
- 174*294
- 83*295
- 175*295
- 175*295
- 144*295
- 2*140*208
- 112*293
- 387*100
- 151*293
- 2*140*207
- 147*293
- 119*338
- 147*338
- 2*140*208
- 1340
- 197
- 172
- 348
- 194
- 200
- 196
- 207
- 330
- 390
- 2*139
- 590
- 175*293
- 113*293
- 2*140*207
- 151*293
- 2*140*207
- 147*293
- 119*338
- 147*338
- 2*140*208
- 118*294
- 178*294
- 172*294
- 174*294
- 83*294
- 174*294
- 73*294
- 174*294
- 83*295
- 175*295
- 175*295
- 144*295
- 2*140*208
- 112*293
- 387*100
- 151*293
- 2*140*207
- 147*293
- 119*338
- 147*338
- 2*140*208
- 118*294
- 178*294
- 172*294
- 174*294
- 83*294
- 174*294
- 73*294
- 174*294
- 83*295
- 175*295
- 175*295
- 144*295
- 2*140*208
- 112*293
- 387*100
- 151*293
- 2*140*207
- 147*293
- 119*338
- 147*338
- 2*140*208
- 118*294
- 178*294
- 172*294
- 174*294
- 83*294
- 174*294
- 73*294
- 174*294
- 83*295
- 175*295
- 175*295
- 144*295
- 2*140*208
- 112*293
- 387*100
- 151*293
- 2*140*207
- 147*293
- 119*338
- 147*338
- 2*140*208
- 118*294
- 178*294
- 172*294
- 174*294
- 83*294
- 174*294
- 73*294
- 174*294
- 83*295
- 175*295
- 175*295
- 144*295
- 2*140*208
- 112*293
- 387*100
- 151*293
- 2*140*207
- 147*293
- 119*338
- 147*338
- 2*140*208
- 118*294
- 178*294
- 172*294
- 174*294
- 83*294
- 174*294
- 73*294
- 174*294
- 83*295
- 175*295
- 175*295
- 144*295
- 2*140*208
- 112*293
- 387*100
- 151*293
- 2*140*207
- 147*293
- 119*338
- 147*338
- 2*140*208
- 118*294
- 178*294
- 172*294
- 174*294
- 83*294
- 174*294
- 73*294
- 174*294
- 83*295
- 175*295
- 175*295
- 144*295
- 2*140*208
- 112*293
- 387*100
- 151*293
- 2*140*207
- 147*293
- 119*338
- 147*338
- 2*140*208
- 118*294
- 178*294
- 172*294
- 174*294
- 83*294
- 174*294
- 73*294
- 174*294
- 83*295
- 175*295
- 175*295
- 144*295
- 2*140*208
- 112*293
- 387*100
- 151*293
- 2*140*207
- 147*293
- 119*338
- 147*338
- 2*140*208
- 118*294
- 178*294
- 172*294
- 174*294
- 83*294
- 174*294
- 73*294
- 174*294
- 83*295
- 175*295
- 175*295
- 144*295
- 2*140*208
- 112*293
- 387*100
- 151*293
- 2*140*207
- 147*293
- 119*338
- 147*338
- 2*140*208
- 118*294
- 178*294
- 172*294
- 174*294
- 83*294
- 174*294
- 73*294
- 174*294
- 83*295
- 175*295
- 175*295
- 144*295
- 2*140*208
- 112*293
- 387*100
- 151*293
- 2*140*207
- 147*293
- 119*338
- 147*338
- 2*140*208
- 118*294
- 178*294
- 172*294
- 174*294
- 83*294
- 174*294
- 73*294
- 174*294
- 83*295
- 175*295
- 175*295
- 144*295
- 2*140*208
- 112*293
- 387*100
- 151*293
- 2*140*207
- 147*293
- 119*338
- 147*338
- 2*140*208
- 118*294
- 178*294

Brossa Room

Ground floor

 2,5m


 215 m2

Technical sources

 WIFI

 Lighting

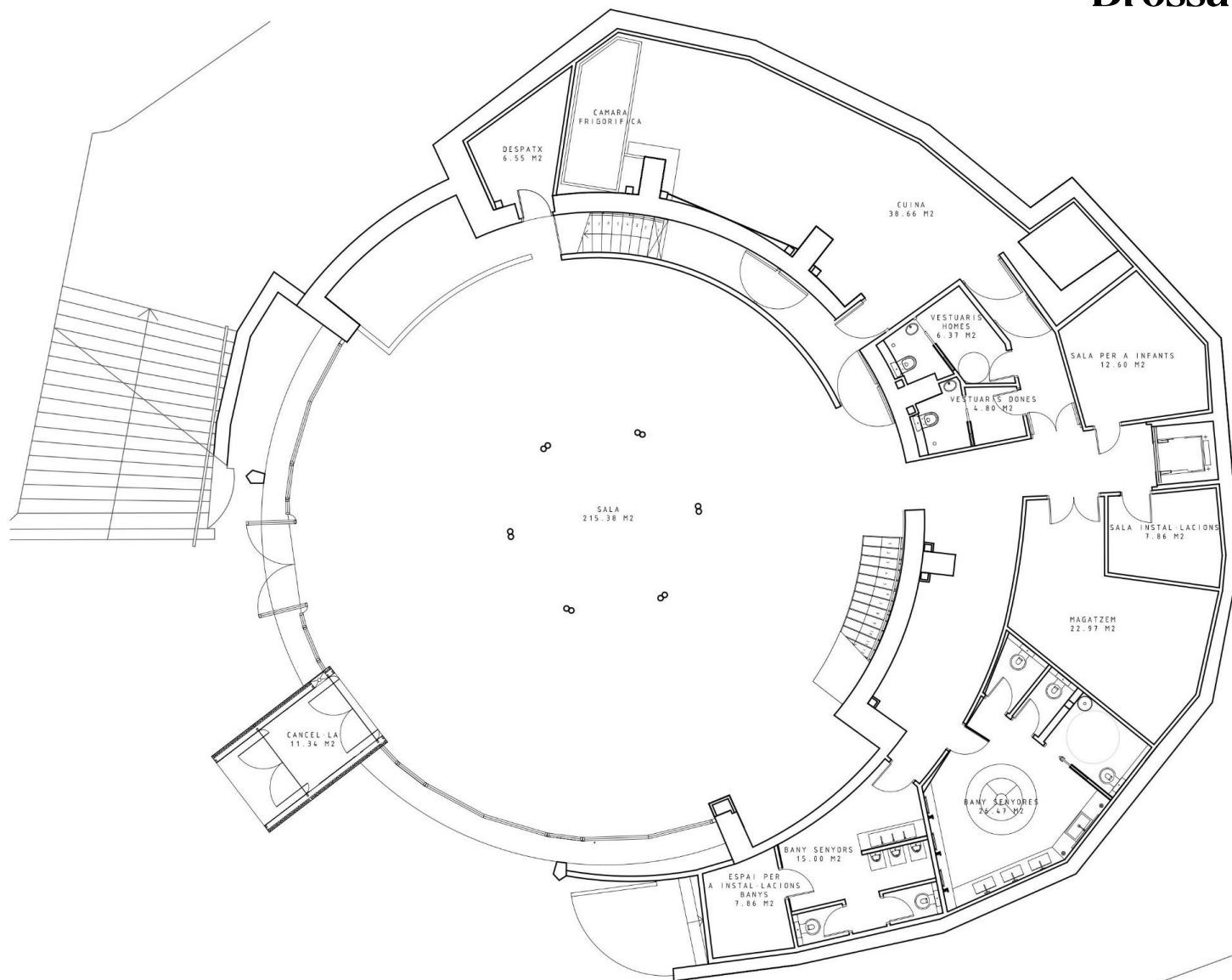
 Sound

 2 TV Screens of 60" with bracket

Technical data:

- 13 units of single phase charts type
- 2 units of single phase charts type located in the kitchen
- 2 units of three phase charts type
- 2 unit of three phase charts type in the terrace
- Outlets contain VGA Cable 8 PIHS located in the ceiling ready for delivery Audio to Video Projector from Rack.

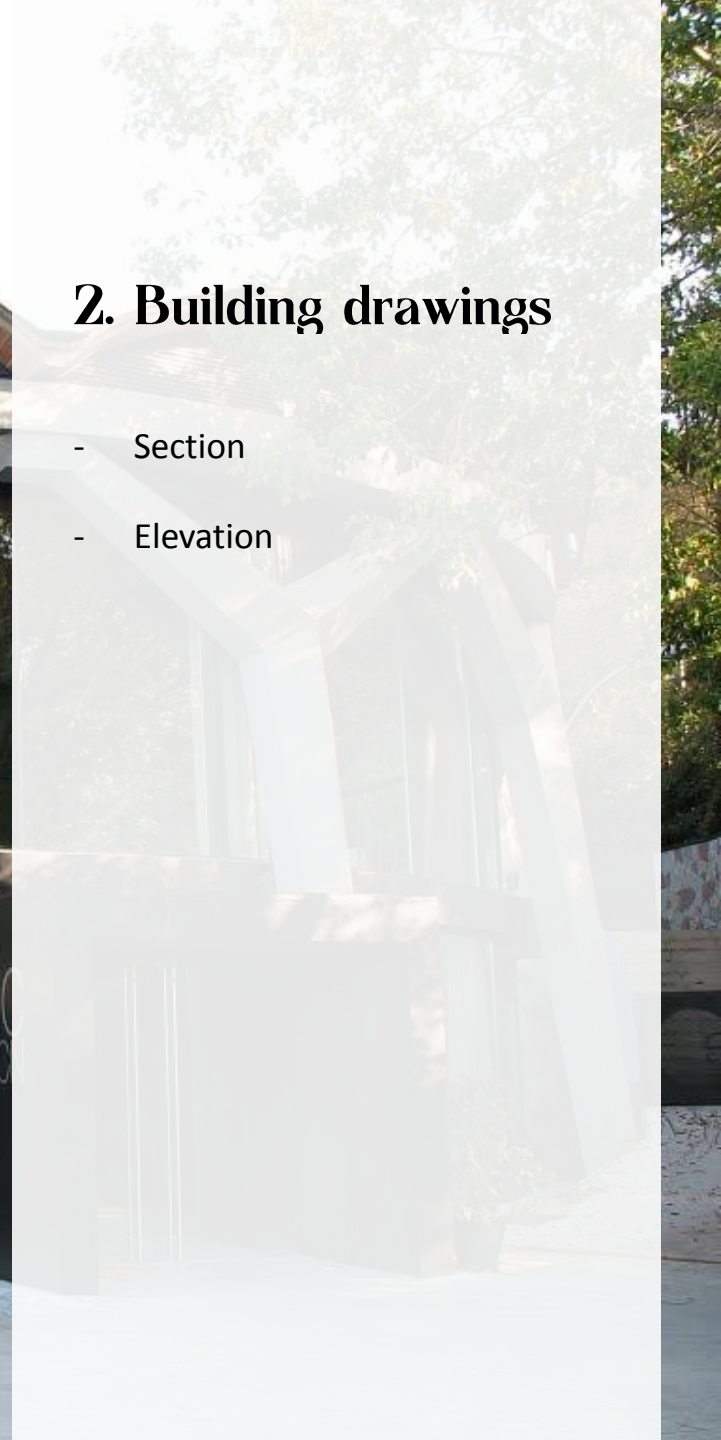
Brossa Room





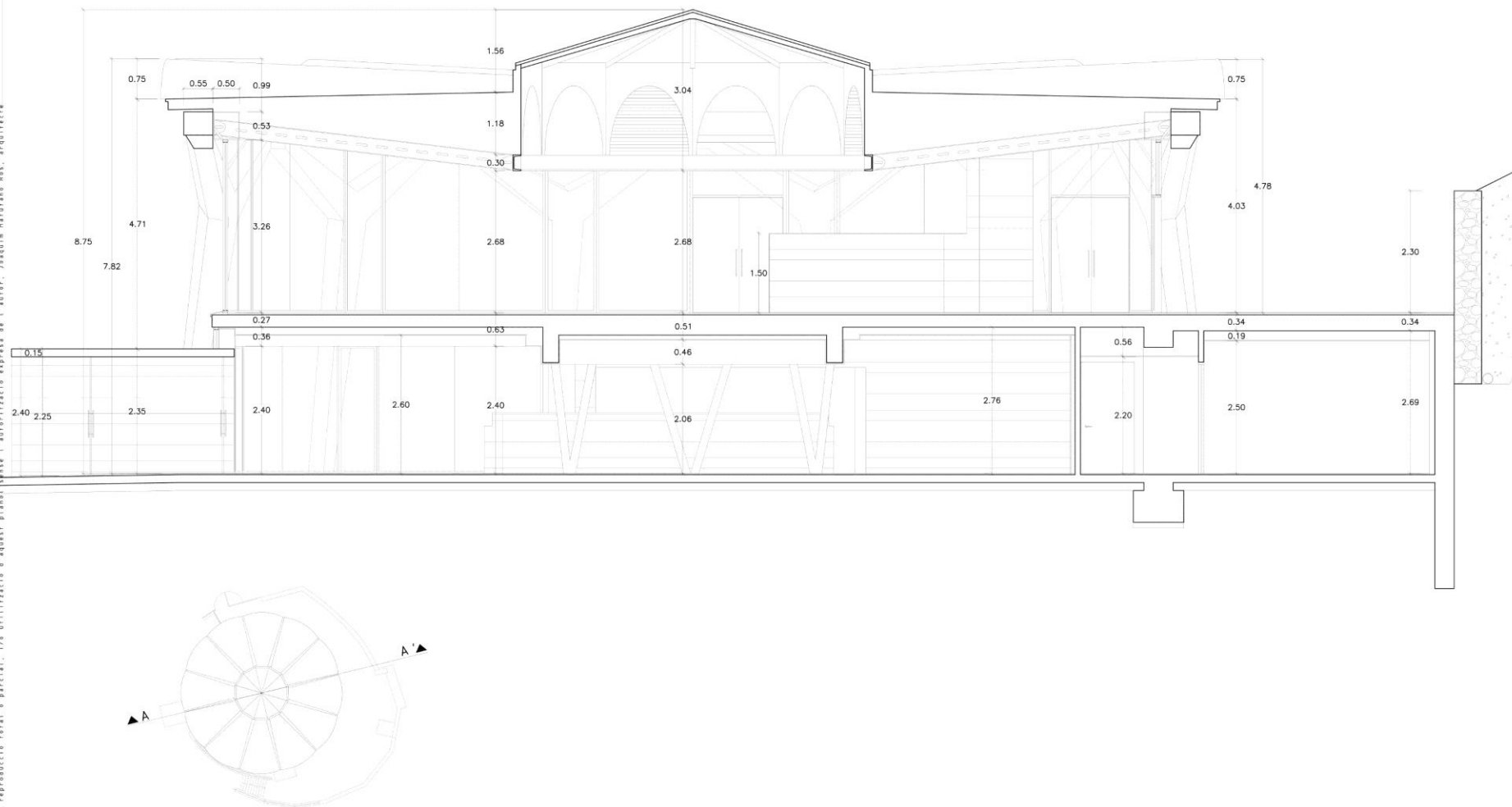
2. Building drawings

- Section
- Elevation

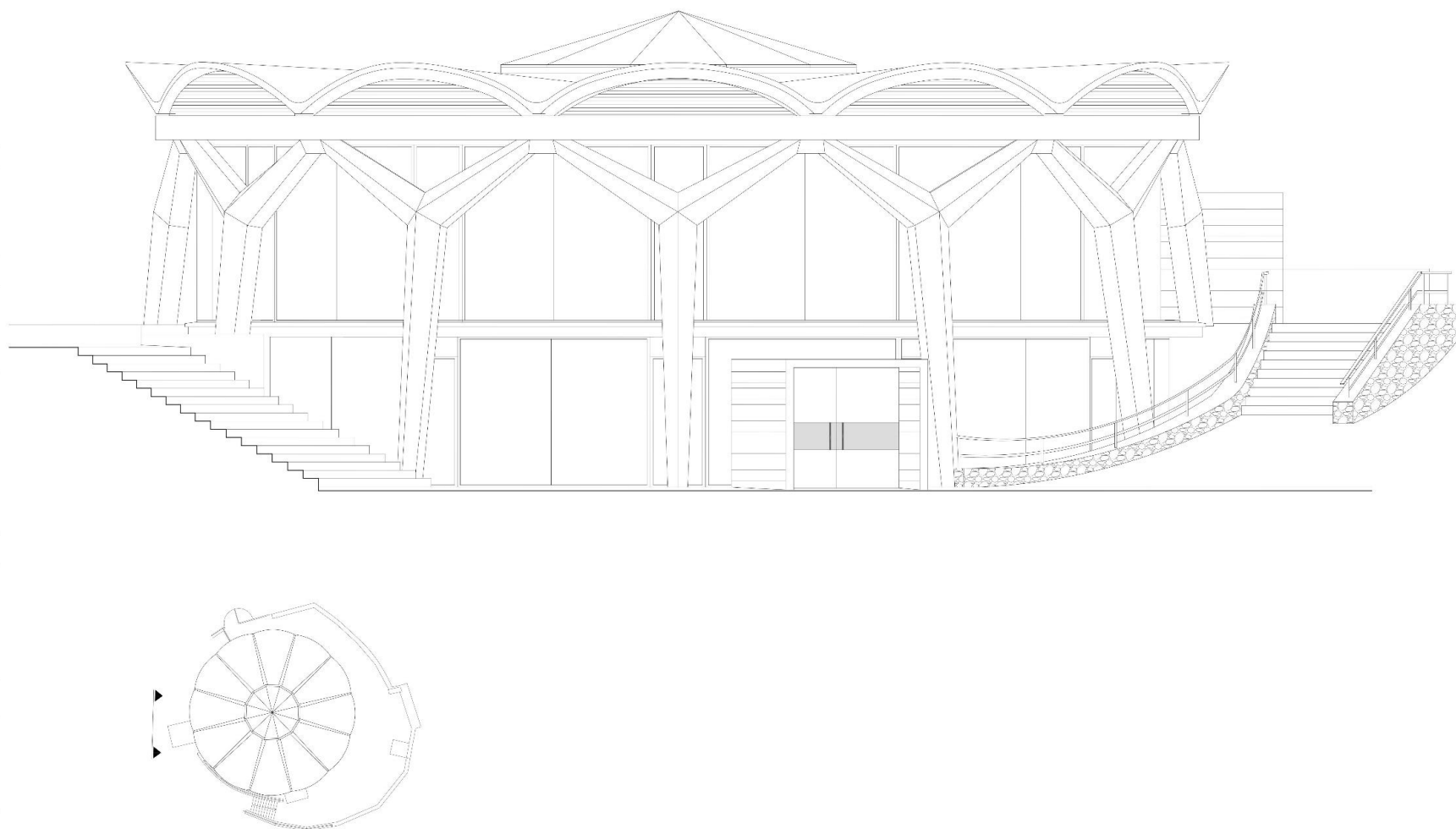


Section

Prohibida la reproducció total o parcial. És utilització d'aquest planol sense l'autorització expressa de l'autor. Joaquim Nadalano Bar, arquitecte



Elevation





3. Electrical specifications

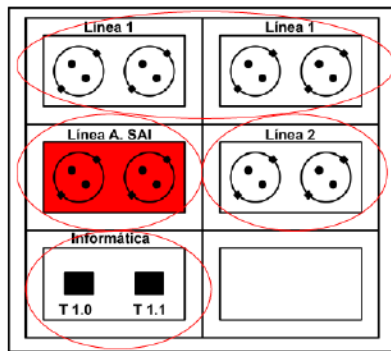
- Single phase chart
- Three phase chart

Electrical Specifications

The building total power is 277 Kw, 230 Kw of which are used to supply voltage taps, distributed in total of 45 shots from three-phase and single phase, at different points of the building.

Single phase charts type:

Tables distributed every three meters on the ground along the perimeter of both rooms.



- Four Shuko connections connected to a 600 wat power line.
- Two Shuko connections connected to a 10 kVA UPS of 75 minutes of autonomy. 300 Wat power line
- Two Shuko connections connected to a 300 Wat power line.
- RJ45 connectors, with Access to computer networks, telephone or TV.

35 units of single phase charts

10,8 Kw power by frame

61,2Kw total power available in boxes

12 single phase lines of 16 Amp/C.u.

Number of lines UPSs: 5 phase lines 16 Amp / C.u and 75 mins of autonomy.

Three phase charts type:

All outlets spread across three phase voltage in Esferic, offer single magneto –thermal and differential protection, according to relevant regulations in BT.

All sockets are installed to: **Cetact 3F+N+T 32 Amp-6h 220/380 Outlet**

9 units of three phase charts.

20 Kw (400 Volt) of individual power outlet.

180 Kw (400 Volt) of three phase total power.



4. Audiovisual material



Audiovisual material

SPACE	LIGHTING	SOUND	AUDIOVISUALS
BROSSA ROOM	2 x Robin 100 Led Beam 4 x Smart mac 1 x Intimidator spot led 350	8 BOSE Speakers	2 TV Screens of 60" with bracket
VIDRERES ROOM	8 x Afx Spotlights	8 BOSE Speakers 2 Wireless microphones 2 Headband mipcrophones	1 Hitachi Projector, Model CP-X5550 – 6000 lumens. 1 Screen of 3x2m
BROSSA TERRACE	9 x Elam Spotlights to illuminate the façade Garland Lights	2 JBL EON 615 Wireless speakers	
VIDRERES TERRACE	12 x Mark Superbat LED 72 spotlights	2 JBL EON 610 Wireless speakers	



5. Technical Rider

- Robin 100 LEDBeam
- Martin Smart Mac
- Intimidator Spot LED 350
- Mark Superbat LED 72
- Jbl Eon 615
- Hitachi CP-X5550

Technical rider

Robin 100 LEDBeam

SOURCE:

- Light source: 12x 15W RGBW multichips
- Led Life Expectancy: minimum 60.000 hours
- Typical Lumen Maintenance: 70% @ 60.000 hours



OPTICAL SYSTEM AND EFFECTS

- High efficient component optics
- Beam angle 7°
- RGBW (CMY), 8 or 16 bit colour mixing
- CTO filter
- Virtual colour wheel with pre-programmed 237 colours including whites (2.700 K, 3.200 K, 4.200 K, 5.600 K and 8.000 K)
- Three LED zone
- Individual colour control of each LED zone
- Tungsten lamp effect at whites 2.700 K and 3.200 K
- Colour rainbow effects in both directions with variable speed
- Zone colour effects in both directions with variable speed
- High resolution dimmer 0–100%
- Strobe effect with variable speed (max. 20 flashes per second)
- Individual zone strobe effects with variable speed
- Pre-programmed random strobe & pulse effects

CONTROL & PROGRAMMING

- Setting & Addressing: two-row LCD display & 4 control buttons
- Protocols: USITT DMX-512, RDM
- Optional wireless external module available: CRMX™ technology from Lumen Radio

- Control channels: 35, 19, 14, 9, 35, 37
- 6 DMX protocol modes
- 6-editable programs, each up to 25 steps
- Stand-alone operation
- Pan and Tilt movement range: 450°/300°
- Data in/out: Locking 5-pin XLR
- Power in/out: Neutrik PowerCon
- Built-in analyzer for easy fault finding

THERMAL:

- Maximum ambient temperature: 45 °C (113 °F)
- Maximum housing temperature: 75 °C (167 °F)

ELECTRICAL SPECIFICATION

- Electronic auto-ranging
- Input voltage: 100–240 V AC, 50–60 Hz
- Max. power consumption: 200 W

MECHANICAL SPECIFICATION

- Height: 314 mm (12.4")
- Width: 233 mm (9.2")
- Depth: 149 mm (5.9")
- Weight: 4 kg (8.8 lbs)

RIGGING

- Mounting points: one pair of ¼-turn locks
- 1 x Omega brackets with ¼-turn quick locks

Martin Smart mac



PHYSICAL:

- **Length:** 387 mm including handles
- **Width:** 352 mm
- **Height:** 454 mm, head horizontal
- **Height:** 448 mm, head straight up
- **Weight:** 21 kg

DYNAMIC EFFECTS:

- Color wheel: 8 interchangeable dichroic filters + open, full and split colors, music trig, continuous rotation, random color
- Rotating gobo wheel: 6 interchangeable gobos + open, indexing, continuous gobo rotation & scrolling, shake
- Shutter: Fadeable, strobe effect up to 9 Hz, pulse effects, instant open and blackout
- Focus: 2 m to infinity
- Pan: 600°
- Tilt: 257°

CONTROL AND PROGRAMMING:

- Control options: DMX, stand-alone, synchronized (master/slave) DMX channels: 12/15
- Setting and addressing: Control panel with LED display
- Macro programs: 10 pan/tilt and 10 effects macros, all with staggered start/chase feature
- Macro selection: DMX or onboard control panel
- Movement control options: Tracking and vector 16-bit control: Rotating gobo indexing, pan & tilt
- Protocol: USITT DMX512/1990
- Stand-alone and master/slave programming: Control panel with LED display Stand-alone memory: 100 scenes
- Receiver: RS-485
- Firmware update: Serial upload via DMX link

LAMP:

- **Type:** 150 W discharge
- **Fitted as standard: Philips MSD 150/2**
- **Color temperature:** 8500 K CRI (Color rendering index): 70
- **Average lifetime:** 3000 hours (9000 hours with CDM SA/T lamp)
- **Hot restrike:** No
- **Socket:** G12
- **Ballast:** Magnetic
- **Approved alternative lamp(s):** Philips CDM-SA/T 150

OPTICS:

- **Beam angle:** Standard lens with diffuser 25° (24° without diffuser), cut-off angles

CONSTRUCCIÓN:

- **Color(s):** Black or white
- **Housing:** UV-resistant fiber-reinforced composite and die-cast aluminum
- **Reflector:** Glass, cold light
- **Protection rating:** IP20

GOBOS:

- **Outside diameter:** 27.9 mm +0/- 0.3 mm
- **Maximum image diameter:** 23 mm
- **Maximum thickness:** 1.8 mm
- **Recommended glass:** High-temperature Borofloat or better with dichroic or enhanced aluminum coating
- **Recommended metal:** Aluminum (steel for temporary use only)

INSTALLATION

- **Mounting points:** Quick release mounting bracket or 2 pairs of 1/4-turn locks
- **Orientation:** Any

- Minimum distance to illuminated surfaces: 250 mm
- Minimum distance to combustible materials: 100 mm from head, no minimum distance from base

CONNECTIONS:

- AC power input: 3-pin IEC
- DMX data in/out: 3-pin and 5-pin locking XLR

ELECTRICAL:

- AC power: 100-240 V nominal, 50/60 Hz
- Power supply unit: User-reconfigurable voltage and frequency settings
- Main fuse: 4 AT (slow blow)

TYPICAL POWER AND CURRENT:

- 100 V, 50 Hz: 229 W, 2.4 A, PF 0.967
- 100 V, 60 Hz: 226 W, 2.3 A, PF 0.980
- 120 V, 60 Hz: 230 W, 2.2 A, PF 0.897
- 208 V, 60 Hz: 209 W, 1.1 A, PF 0.947
- 230 V, 50 Hz: 216 W, 1.0 A, PF 0.951
- 240 V, 50 Hz: 215 W, 1.0 A, PF 0.937
- Measurements made at nominal voltage. Allow for a deviation of +/- 10%.

THERMAL:

- **Cooling:** Convection
- **Maximum ambient temperature (T_a max.):** 40° C
- **Maximum surface temperature, steady state, $T_a=40^\circ$ C:** 120° C
- **Total heat dissipation (calculated, +/- 10%):** 785 BTU/hr.

Intimidator spot led 350

- **DMX Channels:** 8 or 14
 - **DMX Connectors:** 3-pin XLR
 - **Pan and Tilt:** 540°/270°
 - **Pan and Tilt Ranges:** 540°, 360°, 180° pan/270°, 180°, 90° tilt
 - **Colors:** 8 + white, split colors, continuous scroll at variable speeds
 - **Gobos:** 7 + open, rotating, interchangeable, indexing, slot-n-lock, continuous scroll at variable speeds
 - **Light Source:** 1 LED (white) 75 W (17 A), 50,000 hours life expectancy
 - **Strobe Rate:** 0 to 20 Hz
-
- **Illuminance:** (12°): 9,490 lux @ 2 m (17°): 4,670 lux @ 2 m
 - **Power Linking:** 3 units @ 120 V; 7 units @ 230 V
 - **Input Voltage:** 100 to 240 VAC, 50/60 Hz (auto-ranging)
 - **Power and Current:** 272 W, 2.2 A @ 120 V, 60 Hz 285 W, 1.2 A @ 230 V, 50 Hz
 - **Gobo Size:** 24 mm outside, 20 mm image, 1.1 mm max thickness
 - **Zoom Angle:** (manual): 12° to 17°
 - **Weight:** 22.7 lb (10.3 kg)
 - **Size:** 10.6 x 13.4 x 15.4 in (268 x 340 x 392 mm)



Mark Superbat Led 72



- **Voltage:** 100-240V AC 50-60Hz
- **Power:** 140W
- **LEDs:** 6x12W RGBWA UV 6in1 LED
- **Macros color:** 32 macros
- **Strobe effect:** 1,2,3,4 effects with speed variation
- **Backlight setting:** Off, 5/210/15 seconds
- **Battery icon:** On, Off
- **Date input/output:** 3pin XLR-connection
- **Dimensions (L*W*H):** 135*135*210 mm
- **N.W:** 2.5 kg

Jbl Eon 615



- **System Type:** Self-powered 15", two-way, bass-reflex
- **Max SPL Output:** 127 dB
- **Freq. Range (-10 dB):** 39 Hz - 20 kHz
- **Freq. Response (± 3 dB):** 50 Hz - 20 kHz
- **Coverage Pattern:** 90° x 60°
- **Amplifier Design:** Class D
- **Power Rating:** 1000W Peak (700W LF + 300W HF), 500W Continuous (350W LF + 150W HF)
- **Dimensions (H x W x D) :** 707 x 439 x 365 (mm), 27.8 x 17.3 x 14.4 (in)
- **Net Weight:** 17.69 kg (39 lbs)

Hitachi CP-X5550 Projector



OPTICAL:

- **Display Device:** 3 LCD 0.63" aspect ratio 4:3
- **Resolution:** XGA (1024 x 768)
- **Brightness:** 5800 ANSI lumens (Normal Mode) / 4060 ANSI lumens (Eco Mode)
- **Contrast Ratio:** 10,000:1
- **Lens:** Manual focus, manual zoom x1.6
- **Lens Shift:** Manual (V:0-50%,H:±5%)
- **Lamp Wattage:** 300W
- **Diagonal Display Size:** 30"~300" (76cm~762cm)
- **Lamp Life:** 4000 hours (Normal Mode)/6000 hours (Eco Mode)*
- **Distance To Width Ratio:** 1.4~2.3
- **Focus Distance:** 0.8m~8.6m (Wide) / 1.4m~14.0m (Tele)

COMPATIBILITY:

- **Computer Compatibility:** VGA, SVGA, XGA, WXGA, WXGA+, SXGA, SXGA+, WSXGA+, UXGA, WUXGA, MAC 16"
- **Composite/S-Video:** NTSC, PAL, SECAM, PAL-M, PAL-N, NTSC4.43
- **Component Video/HDMI:** 525i(480i), 525p(480p), 625i(576i), 1125i(1080i@50/60), 750p(720p@50/60), 1125p(1080p@50/60)

FEATURES:

- **Speakers:** 16w Mono
- **Picture Adjustments:** Perfect Fit & V/H Keystone
- **Advanced Features:** Accentualizer technology, DICOM simulation, Instant stack, HDCR (High Dynamic Contrast Range), Edge blending, Warping

CONNECTIONS:

- **Digital Input:** 2 x HDMI (HDCP compatible)
- **Computer Input:** 1 x 15-pin Mini-D-sub
- **Monitor Output:** 1 x D-sub 15-pin connector, 1 x HDMI
- **Video Input:** RCA connector x 1
- **Control:** 1 x D-sub 9-pin
- **USB T Ype A:** 1
- **Wired Network:** 1 x RJ-45
- **Wireless Network:** IEEE802.11b/g/n (Optional USB wireless adaptor is required)
- **Wired Remote Control Port:** 1 x 3.5mm mono mini connector

POWER:

- **Power Requirements:** AC 100V-120V (50/60Hz) 4.4A, AC 220V-240V (50/60Hz) 2.2A

PHYSICAL

- **Dimensions (W X H X D):** 460 x 138 x 334mm (excluding feet and extrusions)
 - **Operating Temperature:** 0 -40°C (Normal mode) / 0-45°C (Eco Mode)
 - **Weight:** 6.9 Kg
 - **Noise Level:** 38dB (Normal Mode) / 29dB (Eco Mode)
 - **Air Filter:** 10,000 hours
-